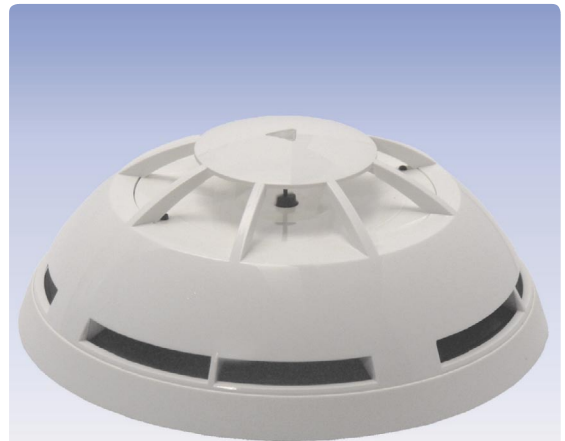


Thermal ROR Detector

FC600/TDIFF/57

- **Addressable conventional technology**
- **Individual detector identification with optional address module**
- **Maximum temperature 57°C**
- **Allows for the connection of an external remote indicator**
- **Anti-tamper locking feature on detector base**
- **Function check by means of test magnet**



Description

The Thermal Rate-of-Rise Detector FC600/TDIFF/57 will respond to temperatures above 57°C (EN 54-5 class A1R) or an abrupt rise in temperature. It can be used in rooms with a height of up to 7.5m. Any alarm will be transmitted to the fire detection panel in conventional technology. An individual detector identification can be obtained with the optional Address Module NG58-1.

The detector is equipped with an LED indicator which is visible from all sides at any angle and thus facilitates

easy identification of the alarming detector. In addition, a remote indicator can also be connected.

Several types of detector bases are available to facilitate quick and easy installation. To prevent unauthorized removal of the detector, all detector bases are equipped with an anti-tamper locking feature. A detector function test can be conveniently conducted by using a test magnet.

Specifications

Operating voltage	10 – 30VDC (supply through detector line voltage)
Current consumption	typ. 40µA (normal condition)
Alarm temperature	57°C (maximum-heat component)
Operating temperature	max. +45°C
Ambient temperature	-30°C to +70°C
Relative humidity	max. 95% (no condensation)
Dimensions ø x h (without base)	106 x 46 (mm)
Colour	white
Weight	80g
Approvals	LPCB 603b/02 0832-CPD-01 27
Order number	242070
Order name	Thermal ROR Detector/Conv./FC600 FC600/TDIFF/57



0832-CPD-0127

Building Safety. Building Security.